



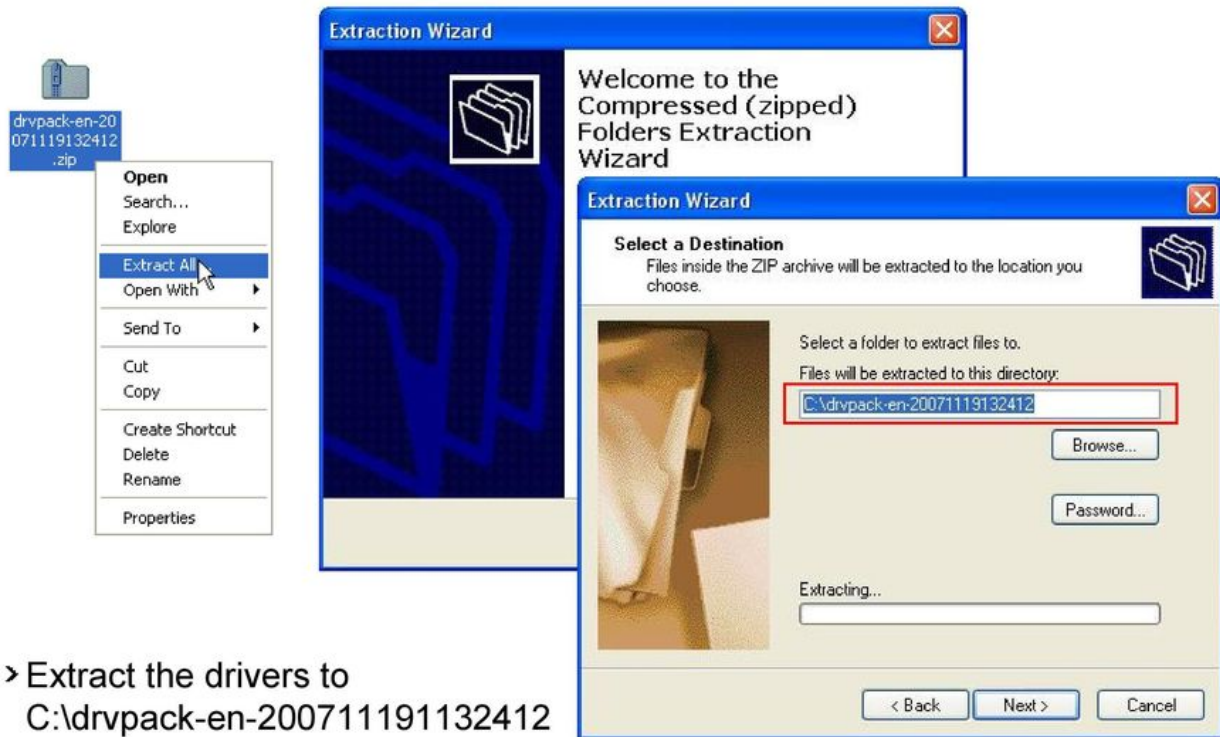
**DOWNLOAD**



**DOWNLOAD**

[Muat Turun Borang Be 2017 English First Class](#)

## Downloading the Drivers – 7: Unpack Drivers to C:\



- > Extract the drivers to  
C:\drvpack-en-200711191132412
- > Do **not** attempt to install drivers from within the Zip file!

[Muat Turun Borang Be 2017 English First Class](#)



**DOWNLOAD**



**DOWNLOAD**



---

• (D3 ) Deductions for Zakat remitted to the collection authority of Malaysian zakat New items added in EA Form C.. One other major change for year 2016 onwards is for the CP8D form The new directive requires all employees to be included in the CP8D file.. Most of these fields are related to detailed Benefit in Kind information, making the Form more streamlined.. Borang Permohonan Pendaftaran Kontraktor (SSPK / 1RoC) Muat Turun; Awam; Borang; HICOE.. Kisi-Kisi USBN Agama Kurikulum 2013 tahun Pelajaran 2017/2018 ini meliputi Beautiful Quran Quotes, Verses & Surah (with English Translation).

P • (B1 )Benefit in Kind Several detailed items in benefit in kind have been removed.. 2016) for the purpose of submission to LHDNM for the Year of Remuneration 2016 Forms Download links: Malay Version • Form EA (C.. These include: • Motorcars • Electricity, water, telephone • Value of household benefits and details.. P 2017) • • • C P 8D(C P 8D-Pin 2017) Format • • English Version • Form EA (C.. Buletin Statistik Pembinaan Suku Tahunan 2017 Muat Turun Borang Pendaftaran Kontraktor.

Condition for 2016 and later: An employer is required to complete this statement on all employees for the year 2016.. English (UK) 31 Likes, 1 Comments - reminders apply to me first (@\_takemetojannah\_) on Instagram.. P 2010) • ii) Form EC (C P 2010) • iii) C P 2015 Format The C P 2015 format can be sent via any of the following methods: • a) e-Filing (txt file format); atau • b) Compact disc (CD) [txt file format or Microsoft Excel] However, employers are required to use the Malay Language version of Form E (CP8-Pin.. At the same time several new fields have also been added Some of the these fields are new to the system and the other new fields required more detailed information from the existing calculations.

JA29 (Awam) MUAT TURUN SYARAT KELAYAKANMUAT TURUN BORANG Condition for year 2015 and earlier: An employer is required to fill in this section if there is any employee whose annual gross remuneration is RM34,000 and above OR for any employee whose annual gross remuneration is less than RM34,000 but the monthly gross remuneration is RM2,800 and above (inclusive of bonus but excluding remuneration in arrears in respect of preceding years) for whichever month in the year 2015.. P 2017) • • C P 8D(C P 8D-Pin 2017) Format • C P 8D Information Layout and Guide on Submission via compact disc (CD) in the following format: txt File, or Microsoft Excel English Version • • Malay Version • • Important announcement on Form E: This is to inform that with effect from the Year of Remuneration 2016, it is obligatory for employers which are companies and Labuan companies (Companies) to furnish Form E (Return Form of Employer) to Lembaga Hasil Dalam Negeri Malaysia (LHDNM) on an electronic medium or by way of electronic transmission Items removed from EA Form C.. P 8D can still be used for submitting 2016 income From LHDN Announcement: The old version of the forms / format allowed to be used for the Year of Remuneration 2016 only is as follows:- • i) Form EA (C.. • Household servant and gardener • Benefit of leave passage for travel • Others (for example food and garments) • (F)Particulars of payment in respect of preceding years.. LHDN announced changes to the EA Form 2016 and C P 8D Forms in early 2017 There have been many changes made to both the EA Form 2016 and C.

EA Form Download links found below Although there is a new EA Form for year 2016, LHDN has announced that the the old versions of FORM EA, FORM EC AND C.. (1403 muat turun) Popular: 14 Mei 2018: Muat turun (pdf, 877 KB) spreadsheet Section.. P 8D forms In the EA form 2016, many fields that were not used regularly have been removed. e10c415e6f